

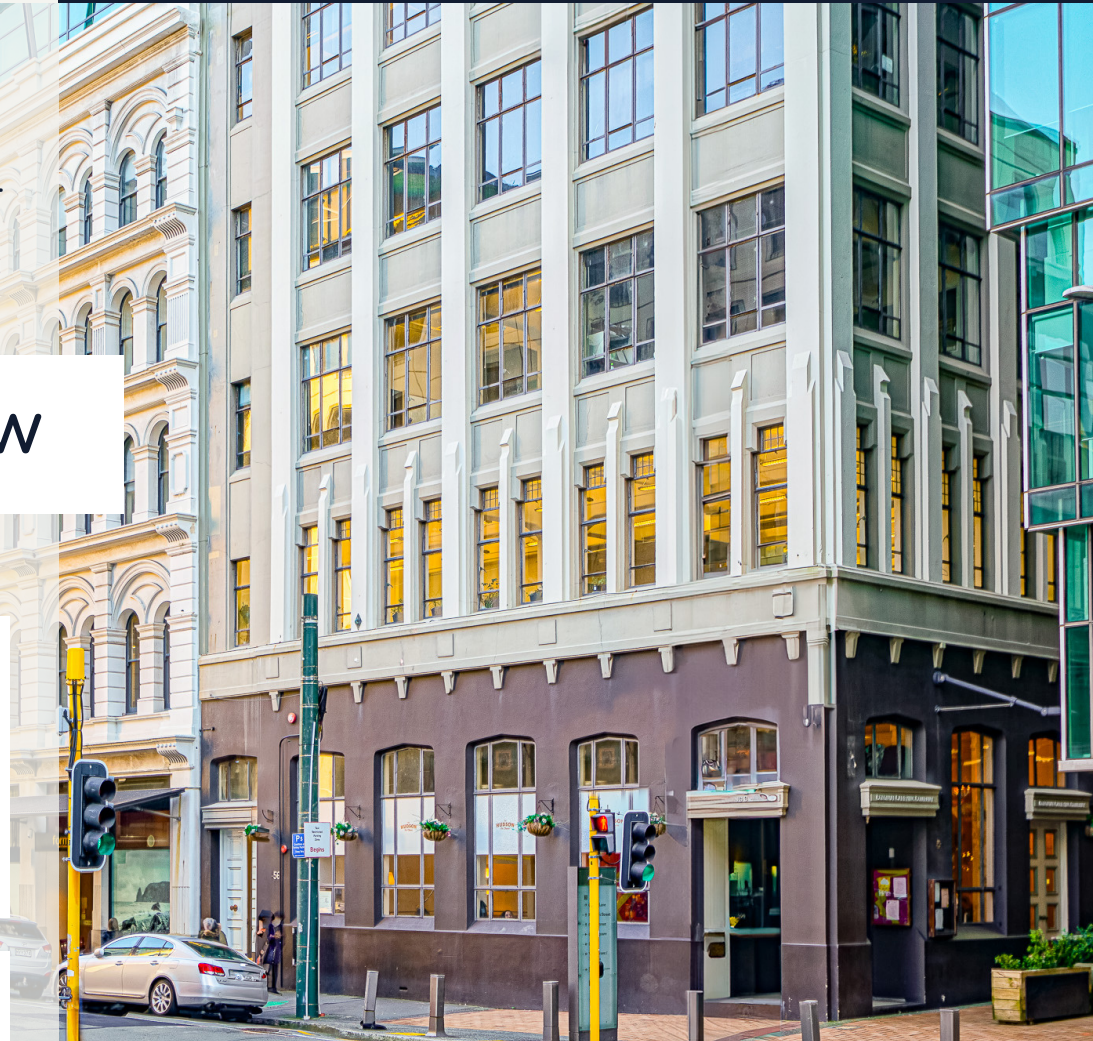
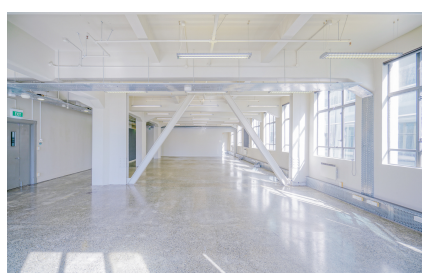
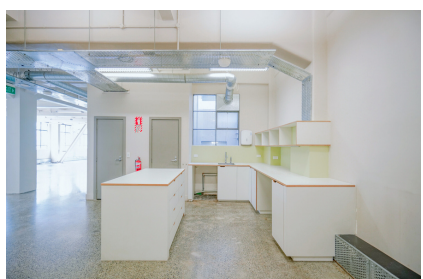
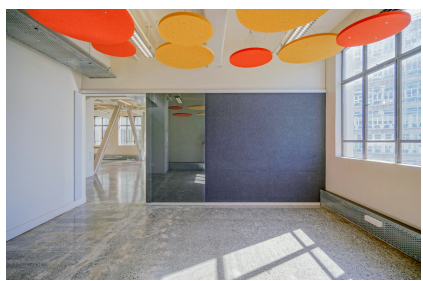


FOR LEASE  
COMMERCIAL OFFICE

LEVEL 5  
56 VICTORIA STREET  
WELLINGTON

AVAILABLE

NOW



## ABOUT THE SPACE

- Open plan layout
- Good amenity for staff to Transport routes, Retail, Cafes and Bars
- High Profile Te Aro location
- High ceiling stud - Fantastic natural light
- Exposed concrete polished floor

## PROPERTY DETAILS



302.7 SQM



INTERNAL  
BATHROOMS



2X  
MEETING ROOMS

# H I S T O R I C 1 9 2 0 S C H A R A C T E R B U I L D I N G

STEP INTO A SPACE THAT EMBRACES THE ESSENCE OF THE ERA WITH ITS EXPOSED CONCRETE POLISHED FLOORS, EVOKING A SENSE OF INDUSTRIAL ELEGANCE. THE HIGH CEILING STUD CEILINGS CREATE AN AIRY AND SPACIOUS ENVIRONMENT, ALLOWING NATURAL LIGHT TO FLOOD IN, WHILE THE CEILING TRAYS MAKE IT EASY TO CONFIGURE YOUR OFFICE WITHOUT CABLE CLUTTER.

WITH A GENEROUS FLOOR AREA OF 302.7 SQUARE METRES, YOU'LL HAVE AMPLE ROOM TO DESIGN A CUSTOMISED OFFICE LAYOUT THAT PERFECTLY SUITS YOUR BUSINESS NEEDS. WHETHER YOU REQUIRE DEDICATED WORKSTATIONS, COLLABORATIVE AREAS, OR LARGE MEETING ROOMS, THIS SPACE HAS IT ALL.

AND SPEAKING OF MEETING ROOMS, YOU'LL BE DELIGHTED TO FIND 2 GENEROUSLY SIZED ONES WITHIN THIS PREMISES, PROVIDING AN IDEAL SETTING FOR IMPORTANT DISCUSSIONS AND BRAINSTORMING SESSIONS. WITH HIGH-SPEED INTERNET CONNECTIVITY THROUGH FIBRE, YOU'LL ALWAYS STAY CONNECTED AND PRODUCTIVE.

CONVENIENCE IS KEY, AND THIS CHARACTER BUILDING DOESN'T DISAPPOINT. INTERNAL BATHROOMS ARE AVAILABLE, OFFERING PRIVACY AND COMFORT FOR YOU AND YOUR TEAM. PLUS, BEING LOCATED CIVIC PRECENT , YOU'LL HAVE EASY ACCESS TO A THRIVING COMMUNITY, VIBRANT CULTURAL EVENTS, AND STUNNING WATERFRONT VIEWS RIGHT OUTSIDE YOUR DOORSTEP.















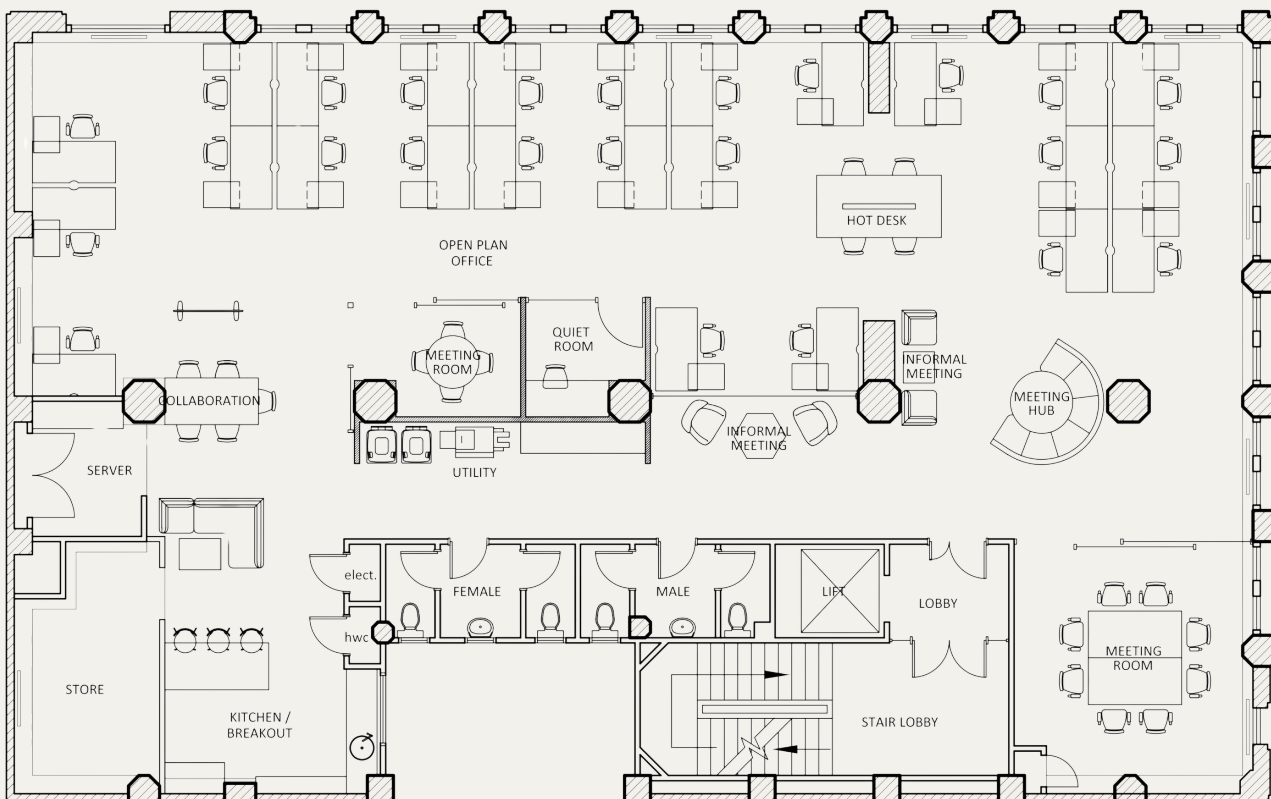
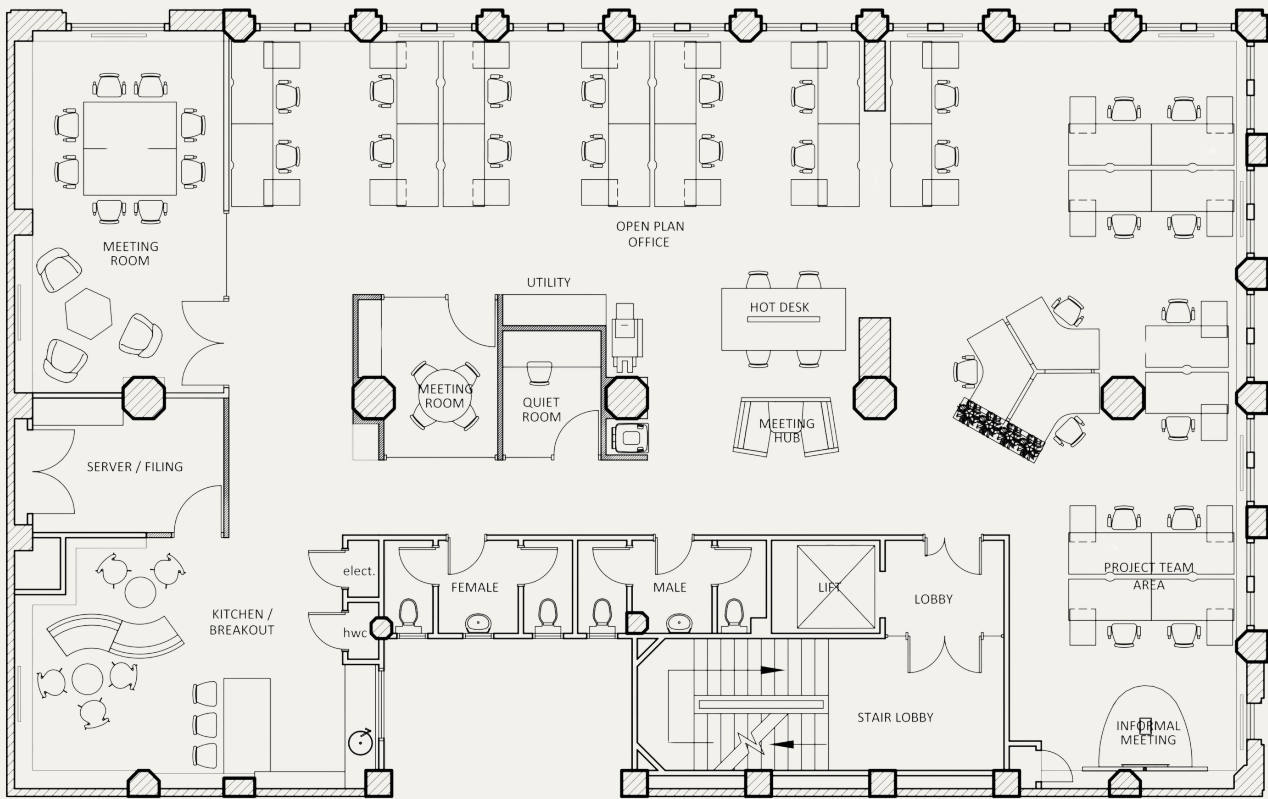








# Test fit-Outs



Test fit-out plans are similar but do not reflect the current lay out



FEEL FREE  
TO GET IN TOUCH



029 200 7083



[jacquie@cspartners.co.nz](mailto:jacquie@cspartners.co.nz)



[cornerstonepartners.co.nz](http://cornerstonepartners.co.nz)



Level 9, 89 The Terrace, Wellington



CORNERSTONE PARTNERS